

Laura Thorne (EPC)
Seagrass Working Group
October 6, 2011

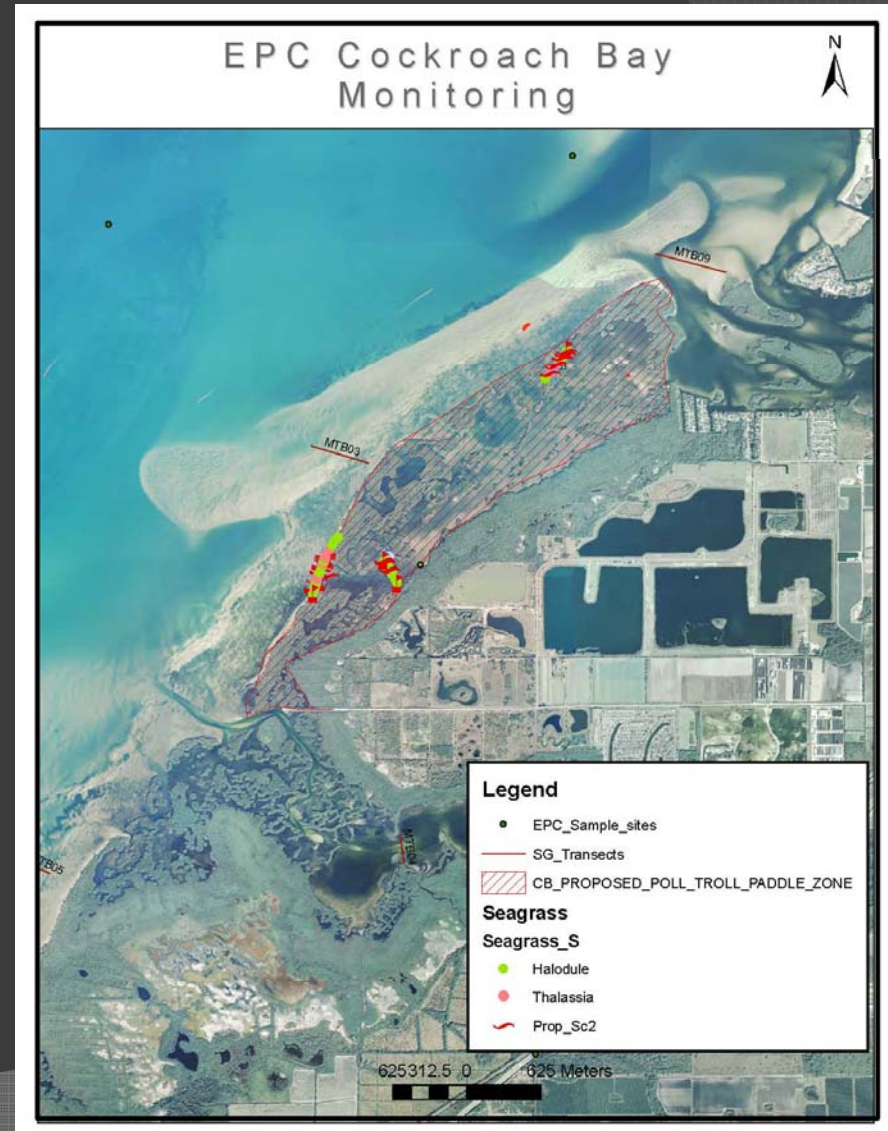
**PROP SCAR MONITORING
AND RESTORATION IN
COCKROACH BAY AQUATIC
PRESERVE**

Overview

- ◎ Seagrass Management Plan
 - Action Item #3 Step 1: Pole and Troll
 - Science to back or disprove value of Pole and Troll requires 5 year study
 - Theory is that the transects within P&T will have less new scars and outside P&T will not change.
- ◎ Best restoration method?
 - Sand Tubes
 - Plugs
 - Restriction Areas

Project Description

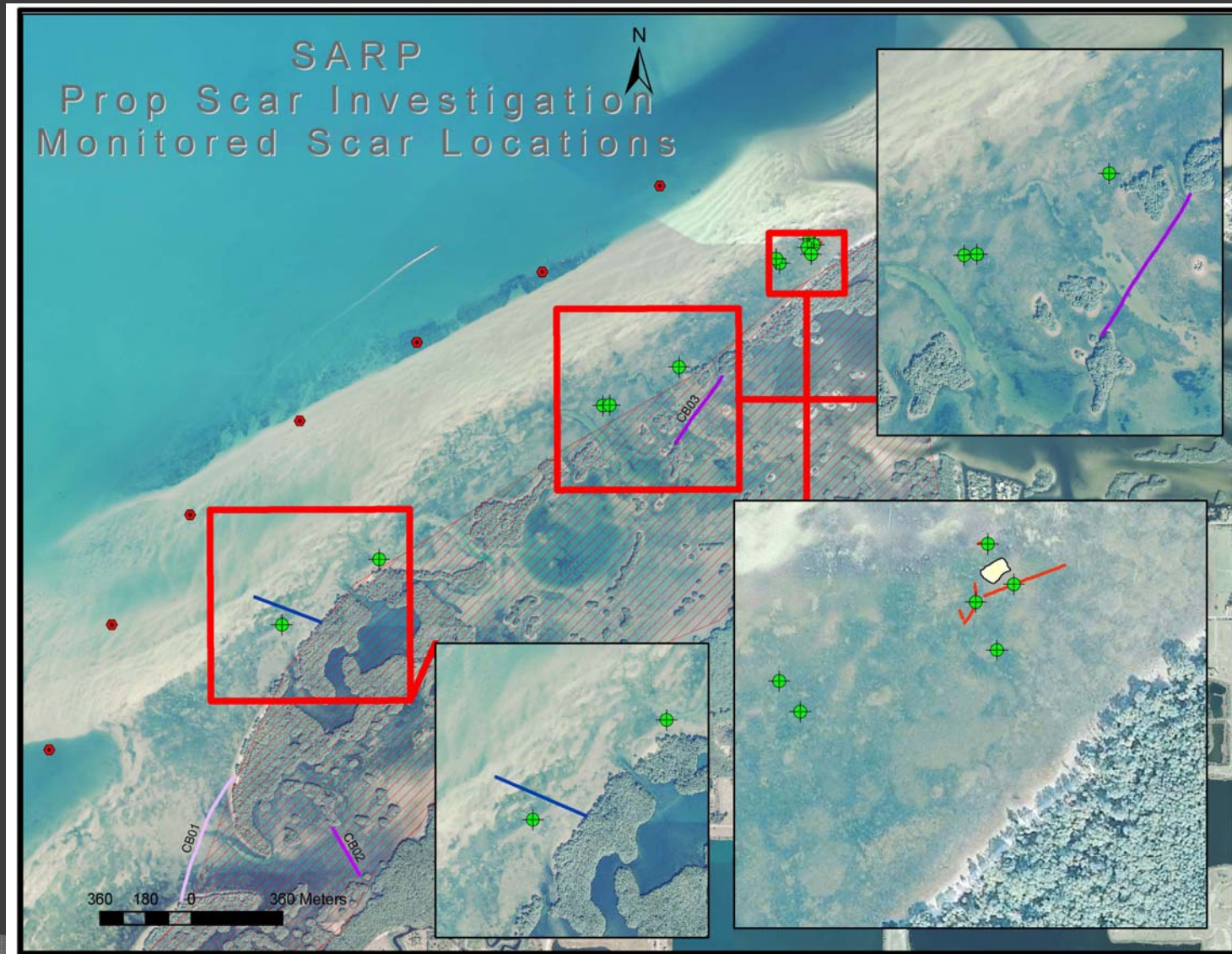
- Monitoring for two years*
 - Characterizing scars in Cockroach Bay
 - How fast do they recover?
 - Which Species are recruiting vs surrounding?
- Sonar
 - Pilot project testing the uses with Seagrass application
- Planned Restoration
 - minimum 900 lft in Spring 2011 using best method based on monitoring



Conclusions as of April 2010

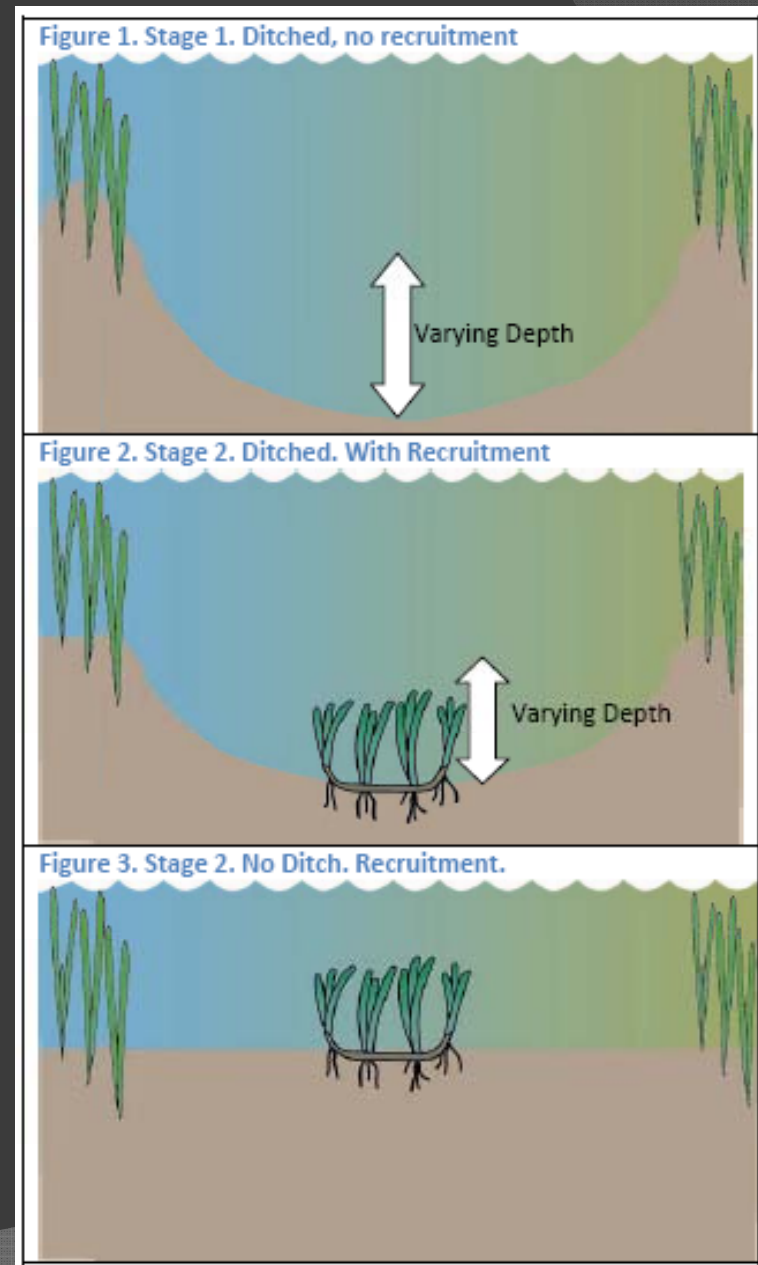
- When Halodule is the surrounding species it recruits first and fastest
- Once recruitment begins sediment replaces within 6 months
- Sonar helps detection of scars in limited visibility but also has limitations

Specific prop scar locations

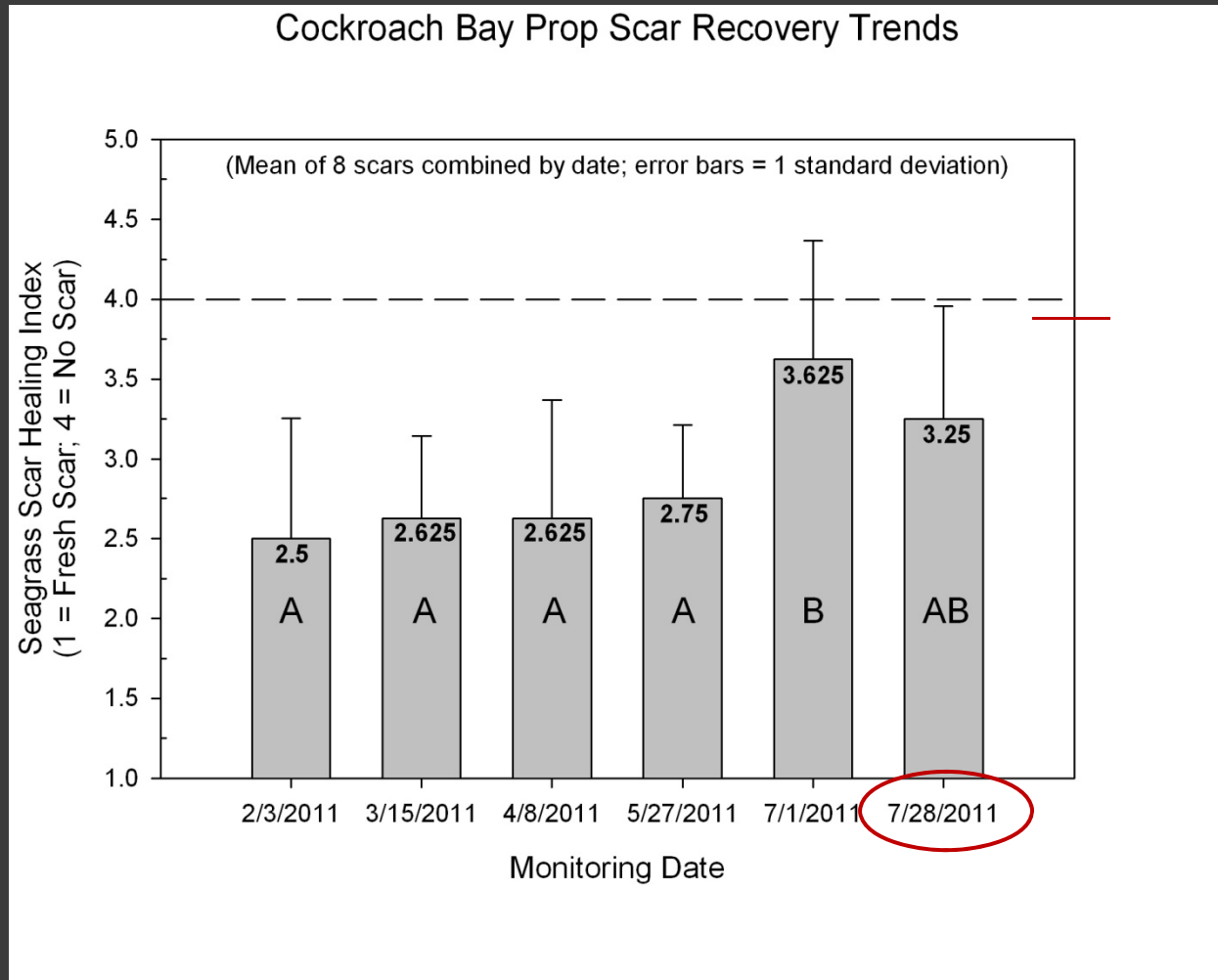


Latest Conclusions Sept 2011

- Majority of boaters are fishing or speeding.
- Halodule does not recruit if it is not in the surrounding bed
- Most scars do not start at Stage 1
 - Small props
 - Haircuts
 - Mucky sediment



Scar Investigation Results



Recommendations

- ① Change focus from pole and troll to enforcement of existing slow speed zones
- ① Alternate restoration location

Thanks

- SARP
- Tampa Bay Watch
- NOAA
- USF